

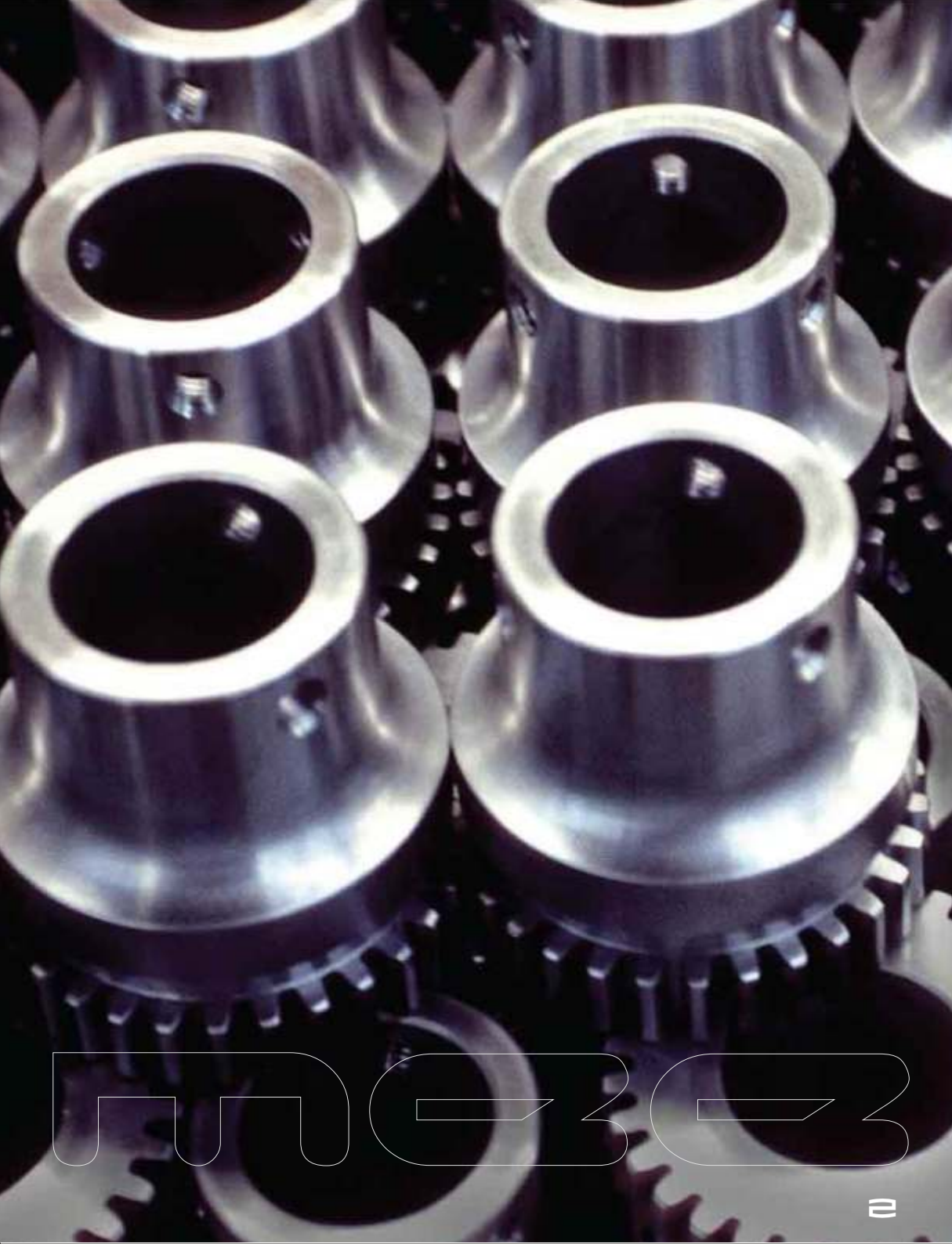
P R O F I L E



**Machinery &
Equipment
Engineering**

Plot 22084, Gaborone West Industrial
P O Box 25696, Gaborone, Botswana
Tel: +267 3901423
Fax: + 267 3901428
Cell: +267 7133 4747
mach-equip-eng@mee.co.bw. sales@mee.co.bw
admin@mee.com. Accounts@mee.co.bw
enidks@mee.co.bw

mee



SERVICES OFFERED

Plant and machine installation, rehabilitation, scheduled maintenance and breakdown maintenance are carried out, these dependant on their nature can be done at our workshop or on site. The company offers precision machining services like lathe-works, milling operations and drilling. Capabilities in this area cover drive systems (shafts, couplings, gears, rollers, etc) thread manufacture and restoration, bushes to mention but a few.



MOBILE PLANT

From the refurbishment of wear parts to the manufactures of support frame work, we have been involved on heavy earth moving plant. We are an accredited service facility for service truck equipment like; waste water (sewerage) tanker vacuum pumps, cranes and towing winches.

SERVICE INDUSTRIES

We have carried out work on water equipment consultancy levels, gathering information and analysing to make recommendations. We service water reticulation equipment.

WATER

OUR SAFETY WEAR

We supply elite safety wear that is ultimately design to suit different industrial environments.

Conti Suits

Available In Assorted Colors and Sizes.

Acid Resistant

SABS approved

Flame retardant

HACCP

Boiler Suit

Polycotton Twin

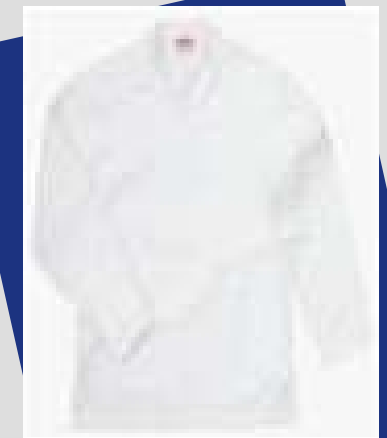
Readily Available In Royal

Footwear

Jonsson Gumboots

SABS Approved Gumboot

Ankle Gumboot



JONSSON[®]

MACHINERY AND EQUIPMENT ENGINEERING



OUR SAFETY WEAR

We supply elite safety wear that is ultimately design to suit different industrial environments.

Conti Suits

Available In Assorted Colors and Sizes.

Acid Resistant

SABS approved

Flame retardant

HACCP

Boiler Suit

Polycotton Twin

Readily Available In Royal

Footwear

Jonsson Gumboots

SABS Approved Gumboot

Ankle Gumboot



MACHINERY AND EQUIPMENT ENGINEERING



AUTHORISED AGENT

SEW

Planetary Gear motors

Helical and helical-bevel Gear Motor

Servo technology

Servo gear unit

Gearmotors

Drive system for decentralized installation

Drive MOVIMOT

Fieldbus Interface

Gearmotors and frequency inverters

Standard gear motors

Frequency inverters

Control technology and industrial communication

MOVI-PLC control technology

Industrial Ethernet

SEW

As a world leader in drive technology and a pioneer in drive-based automation, SEW-EURODRIVE has established a reputation for quickly solving the most difficult power transmission and motion control challenges.

Machinery and Equipment Engineering is the approved distributor of SEW products in Botswana.



AUTHORISED AGENT

MISSION

To provide quality work and to deliver superior customer service through problem-solving methods that contribute to the client's bottom line.

PRODUCTS AND SERVICES

Pneumatics: Cylinders, Air-line (tubes carrying compressed air) equipment, accessories such as switches and conveyors, power units, valves, filtration

Hydraulic: High pressure hydraulic tools, pumps, torque multipliers, cylinders, pullers, wrenches/ mobile plant hydraulic, wire rope cranes, repair tippers

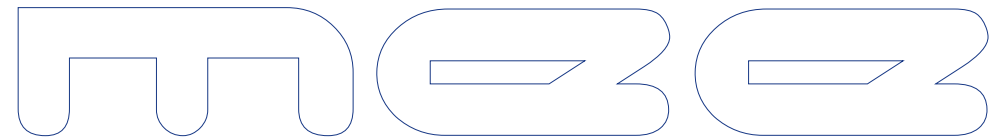
Valves: Knife gate, ball butterfly, non return, globe, pressure reducing, relief check, float

Pumps: Borehole, Submersible, Mono, Slurry, Centrifugal, Multistage, End Suction, Self Priming

Actuation: Electric Pneumatic, Multi turn, Electro hydraulic, Gear boxes, intelligent actuation

Steam Products: Steam valves, boiler controls, steam traps, strainers, heat exchange, PRV

Power Transmission: Gearboxes. Cooling towers, geared motors, couplings, conveyor belts, voith transmission



Seals and packing: Bellows, expansion joints, static seals, metal expansion, compensators, ducting

We also repair all makes of pneumatics and electric actuators, valves, pumps and cylinders. We supply steel profile eg, stainless steel, aluminum checker plate, EN 8 etc



Machinery & Equipment Engineering

Plot 22084, Gaborone West Industrial

P O Box 25696, Gaborone, Botswana

Tel: +267 3901423

Fax : + 267 3901428

Cell: +267 7133 4747

mach-equip-eng@mee.co.bw, sales@mee.co.bw

admin@mee.com, Accounts@mee.co.bw

enidks@mee.co.bw